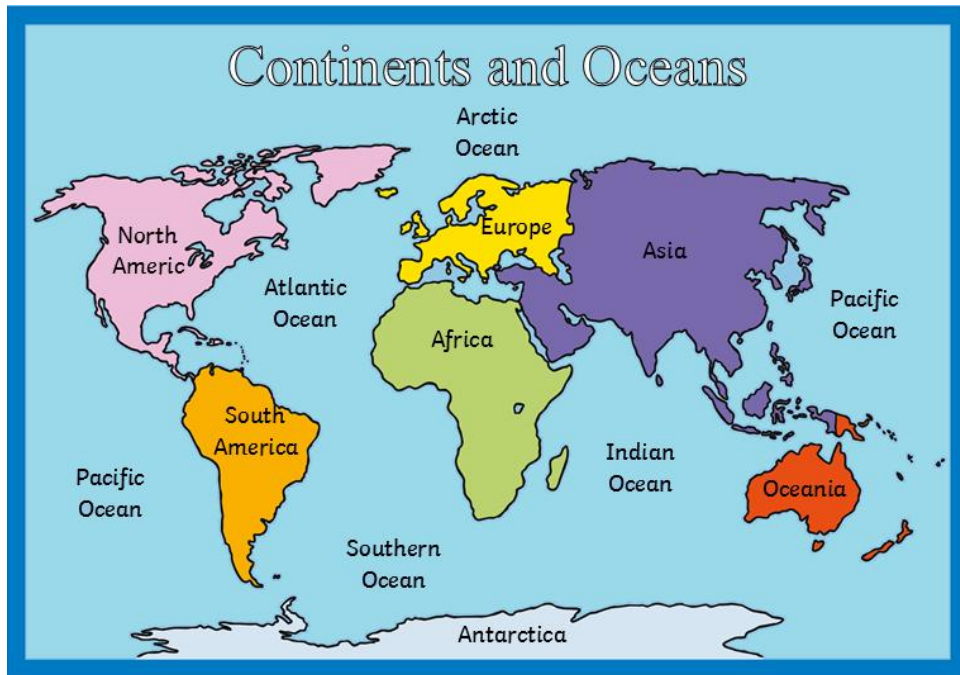


# When Winter Comes

How is the UK different to the Arctic regions?

## Continents and Oceans:



The world is split into 7 continents and 5 oceans.

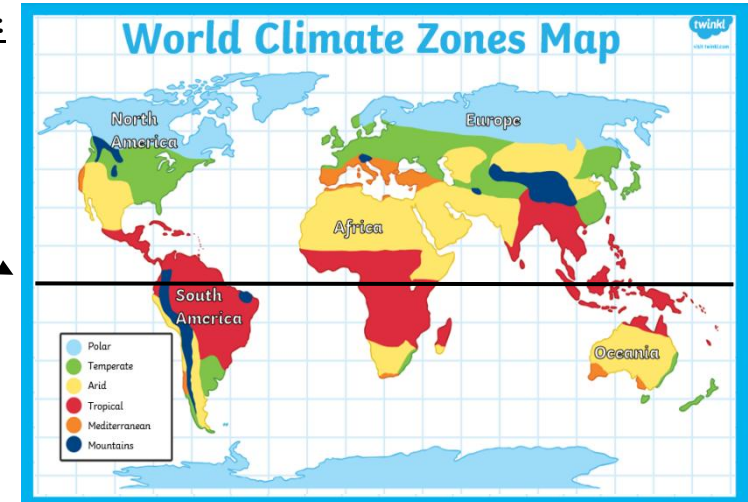
A **continent** is a large area of land made up of many countries.

An **ocean** is vast body of water made up of seas.

The world map shows us where the continents and oceans are.

We live in UK which is located in the continent of Europe.

## Climate Zone:



Equator

Our world is sectioned into 6 **climate** zones.

At the top of the earth there is a polar climate which is very cold. In the UK we live in a **temperate** climate zone which means we have mild summers and winters aren't too cold.

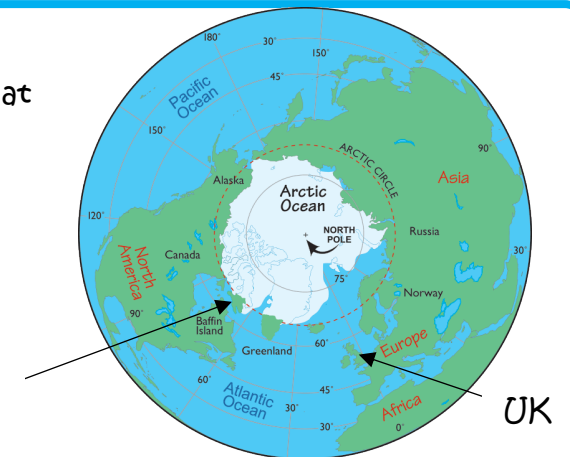
At the equator there is a tropical climate which is hot and humid. The further away from the equator the cooler the climate becomes.

## Arctic:

The Arctic is a polar region at the most Northern part of the Earth.

The Arctic is made up of Canada, Finland, Greenland, Iceland, Norway, Russia and Sweden.

Greenland



## Key vocabulary:

Continents- A large area of land made up of countries.

Ocean- A large mass of water

Equator- An imaginary line around the Earth.

Seasons- Seasons are the four different times in the year that have different types of weather.

Transport- A way of moving people or things from one place to another.

Clothes- Things worn to cover your body.

Inuit- A group of people who live in the Arctic regions.

Adapted- To change so that it is easier to live in a particular place.

Climate- Where there are similar weather patterns.

## Greenland:



What is life like in Greenland?



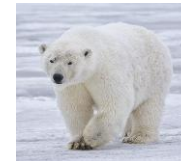
The climate in Greenland is polar which means that it is full of snow and ice. There are lots of different animals that live in Greenland. They have **adapted** to ensure that they can live in the harsh conditions.



Arctic fox



Reindeer



Polar bear



Humpback whale



Walrus

The lifestyle of an Inuit:



Inuit people



Clothing



Houses



Food



Transport